

Key Stage 2 Worksheet

Earth LIVE Lessons: Trees & Our Climate - Professor Mary Gagen



Swansea
University
Prifysgol
Abertawe



What is it about?

Tree ring growth can be absolutely dated, and mapped onto a historical timeline. This tree ring data shows that the temperature changes we have experienced in the twentieth and twenty-first centuries are unprecedented in terms of speed, and are global.

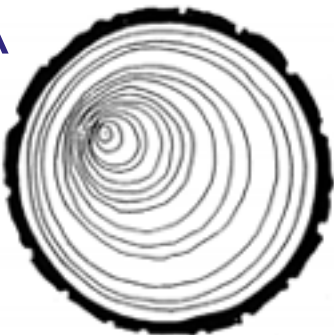
Watch video here:
youtu.be/c0C9YwkfuBg

Open file in your web
browser to click on the
links.

Questions

How old are the tree cross sections shown below?

A



B



Tree A is

Tree B is

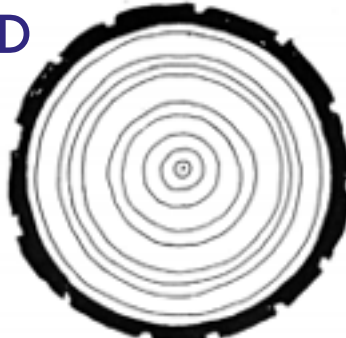
Tree C is

Tree D is

C



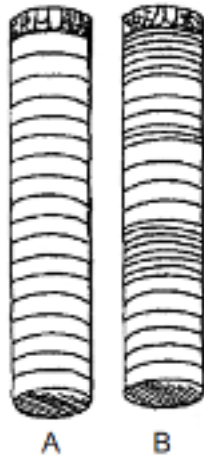
D



Interactive: Click on
boxes to start typing

Not all trees grow at the same rate. Some rings are wide and some are narrow.

CORE DRAWN
OUT



A - fast growth
B - fast growth for the
first 6 years followed by
7 years of slow growth.

Rings narrow, dark and jammed
together show poor growing
conditions.



Both trees are the same age but
one is 1/2 diameter of the other.



Rings wide, light, well spaced,
show good growing conditions.

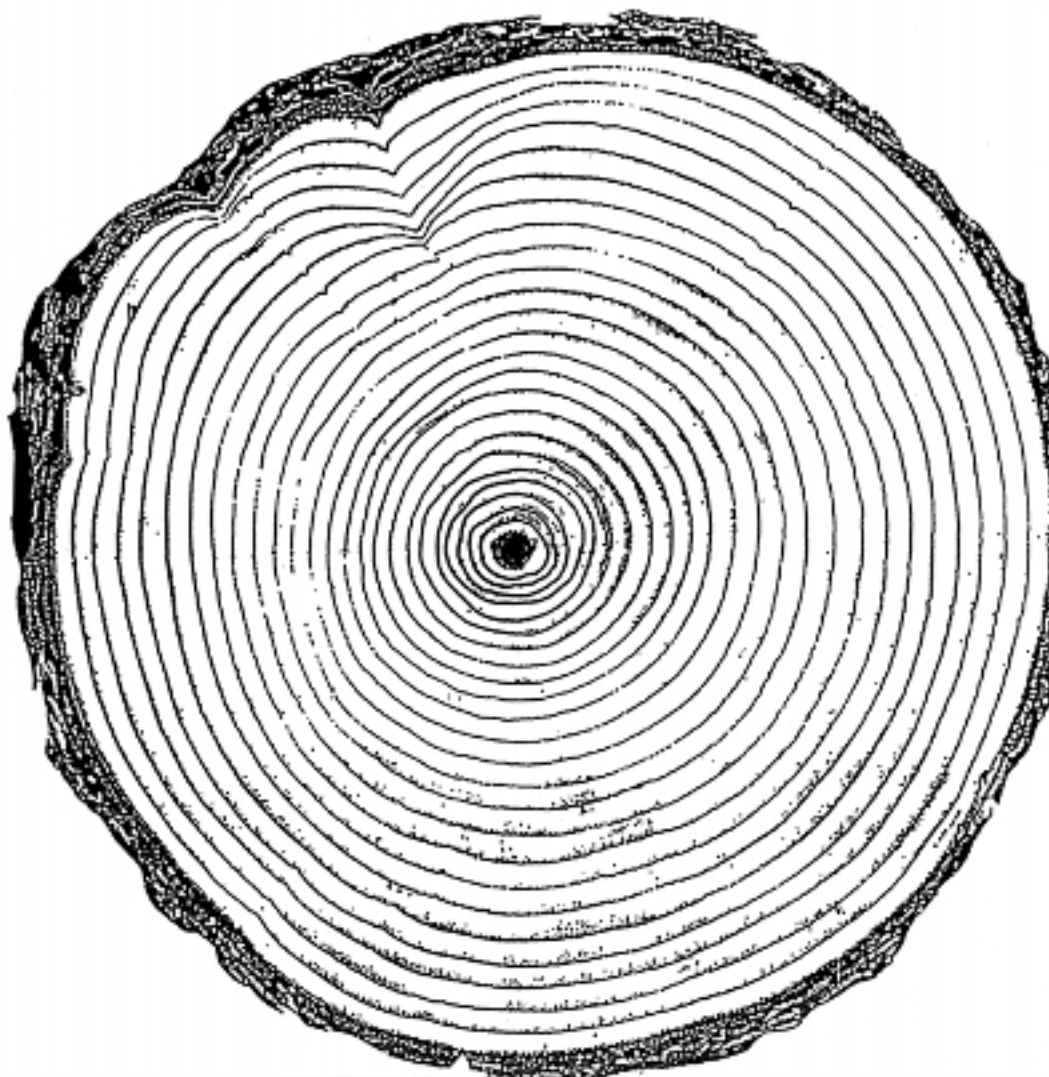
What might make a tree grow a narrow ring?

Tales trees tell

Make up some questions about the statements to the left (e.g. why did the tree grow narrow rings in some years?)

My year

The outside ring is 2015. Count back to find the ring from the year you were born.



Swansea University
Science for
Schools Scheme



Swansea
University
Prifysgol
Abertawe



(S4) Funded by the European Social Fund and the Welsh Government.